

# GOOD TO KNOW

## SALT SPRAY PROTECTION

All powdercoated exterior fixtures from Wever & Ducré undergo highresistant painting and special pretreatment to withstand the salt spray tests for 1500 hours. This is an extremely high standard in the lighting industry and has been applied to our powdercoated products in the past years, making them highly suitable for exterior usage even in environments with high salinity, such as the seaside.



### HOW IS THIS TESTED?

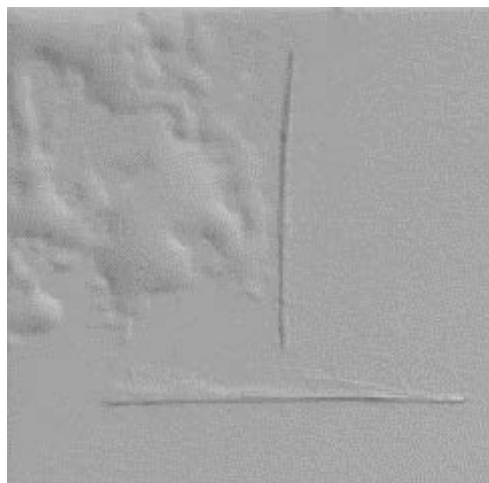
A normative test is conducted to check the corrosion resistance of material surfaces and coating. Scratches are made in the coating to judge the appearance of bubbles, rust, and peeling off in the area where the process of deterioration is much faster than the undamaged surface.

Salt spray testing is an accelerated corrosion test that involves producing a corrosive attack on coated samples to evaluate the suitability of the coating for use as a protective finish. The application takes place over periods of high temperatures and saltwater concentrations in a closed area. If no errors occur after 1500 hours of salt spray testing, compared to the norm, then the sample passes the test. There are also norms for establishing shorter testing periods with higher salt or chemical concentrations to simulate the 1500 hour test cycle and thereby save time. We have already finalised both these methods with successful evaluations. Fixtures with negative testing outcomes were the control samples that did not undergo any pretreatment and were not representative of the production quality.



### EXAMPLE PASSED TEST

No bubbles, uneven surfaces or corrosion marks were found after 1500 hrs



### EXAMPLE FAILED TEST

Deformations and damages were present after 1500 hrs